

SPARE PARTS SECTION

The following section covers the spare parts diagrams and lists that were current at the time this manual was originally printed. Due to continuous improvements of the machine, changes may be made at any time without notification.

HOW TO ORDER SPARE PARTS

1. Have your machines **model number, serial number & date of manufacture** on hand, these can be found on the specification plate mounted on the machine
2. A scanned copy of your parts list/diagram with required spare part/s identified
3. Go to www.machineryhouse.com.au/contactus and fill out the enquiry form attaching a copy of scanned parts list.

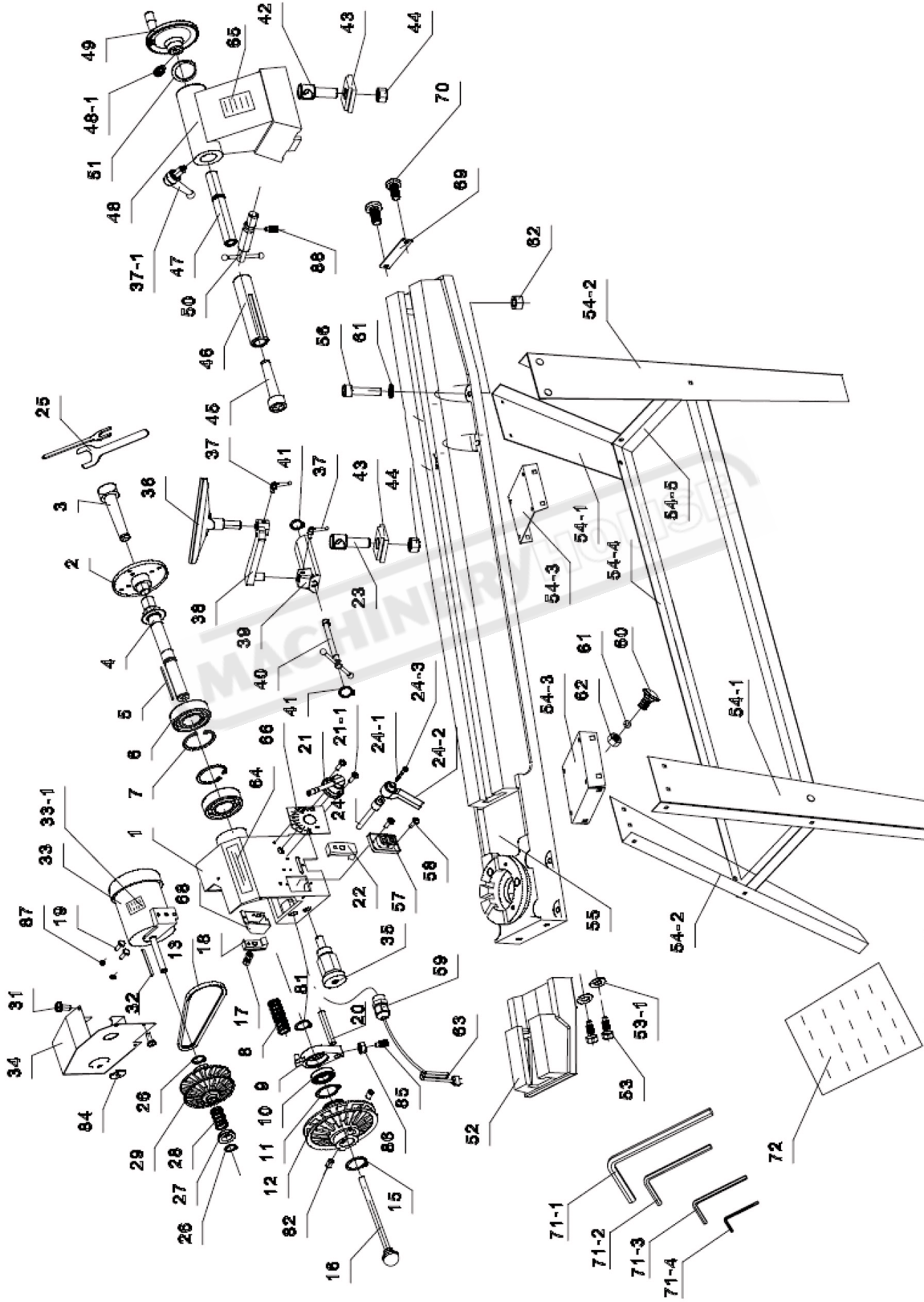
CONTENTS

Spare Parts WL-18.....	20
Spare Parts List WL-18.....	21
Spare Parts WL-20.....	22
Spare Parts List WL-20.....	23
Wiring diagram.....	24



OPERATION MANUAL

Spare Parts WL-18



OPERATION MANUAL

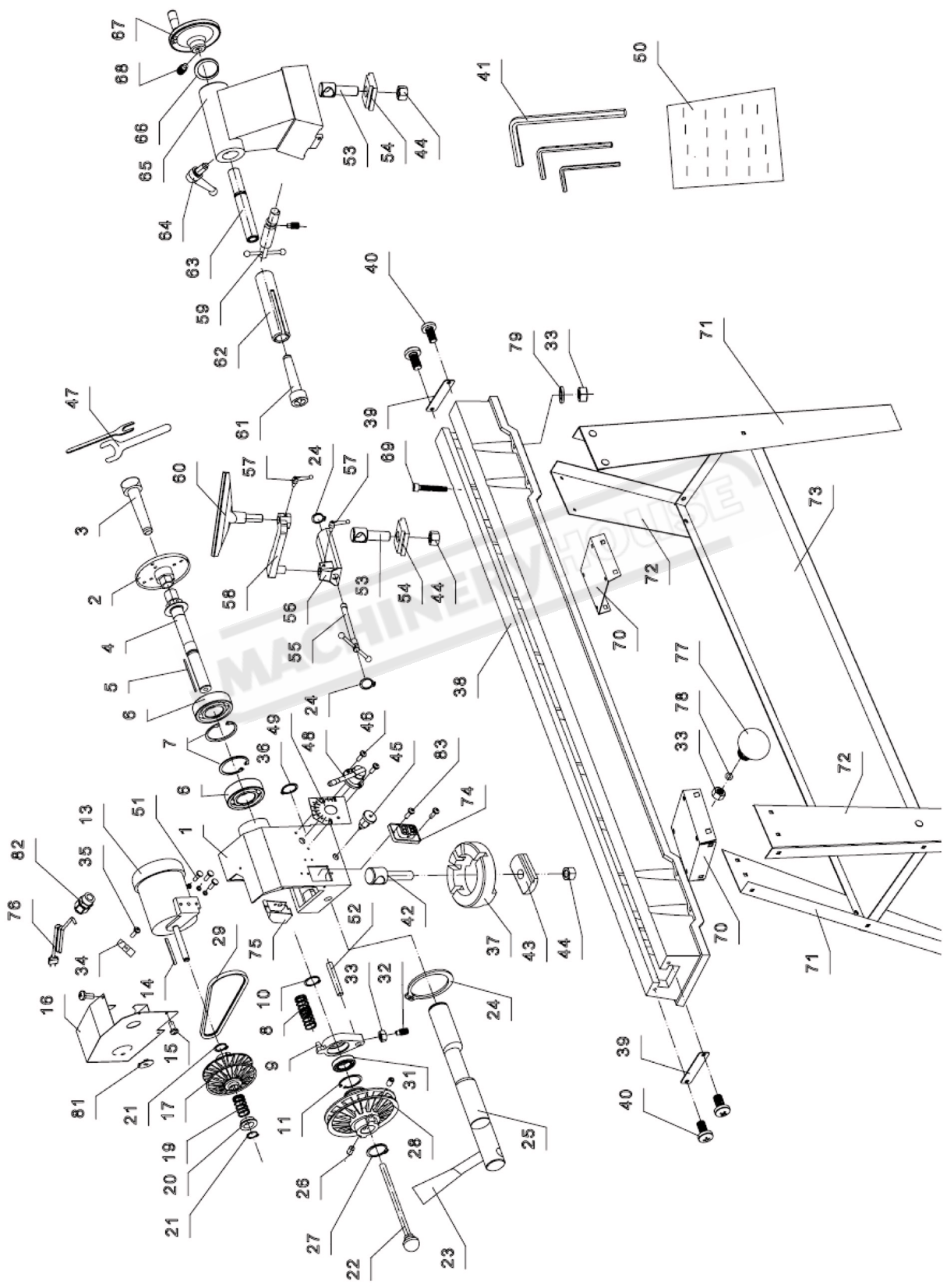
Spare Parts List WL-18

No.	Description	Qty	No.	Description	Qty
1	HEADSTOCK	1	44	HEX NUT M18	2
2	DISC	1	45	CENTER	1
3	DRIVE CENTER	1	46	TAIL SPINDLE	1
4	SPINDLE	1	47	TAILSTOCK SCREW	1
5	KEY 4 X 4 X 80	1	48	TAILSTOCK	1
6	BALL BEARING 6205Z	2	48-1	SET SCREW M8 X 20	1
7	C-RING S-52	1	49	HANDWHEEL	1
8	SPRING	1	50	LOCK HANDLE-TAILSTOCK	1
9	BRACKET SHIFTING LEVER	1	51	SPECIAL WASHER	1
10	BALL BEARING 6007	1	52	EXTENSION BED	1
11	C-RING S-62	2	53	CAP SCREW M10 X 25	2
12	SPINDLE PULLEY SET R & L	3	53-1	LOCK WASHER 10MM	2
13	V-BELT	3	54-1	STAND LEG, LEFT	2
15	C-RING S-16	1	54-2	STAND LEG, RIGHT	2
16	PIN-INJECTION	1	54-3	STAND UPPER COVER	2
17	LOCK NUT	1	54-4	STAND LONG-CROSS SUPPORT	2
18	CLAMP LEFT	1	54-5	STAND SHORT-CROSS SUPPORT	2
19	HEX BOLT	2	55	BED	1
20	RACK	1	56	CAP SCREW M8 x 35	8
21	GEAR ASSEMBLY	1	57	SWITCH	1
21-1	SCREW M5x12	2	58	SCREW M4x12	2
22	CLAMP RIGHT	1	59	PLASTIC JAM NUT M20 X 1.5	1
23	SPECIAL SCREW	1	60	CARRIAGE BOLT M8 x 12	24
24	SHAFT	1	61	WASHER 8MM	24
24-1	SPRING	1	62	HEX NUT M8	1
24-2	LOCK HANDLE	1	63	POWER CORD	1
24-3	SPECIAL CAP SCREW	1	64	NAME LABEL	1
25	WRENCH	2	65	WARNING LABEL	1
26	C-RING S-16	1	66	MOTOR LABEL	1
27	SLEEVE	1	68	SWITCH BOX	1
28	SPRING	1	69	PLATE	2
29	MOTOR PULLEY SET, L & R	1	70	SCREW M5x10	1
31	SCREW M5x8	4	71-1	WRENCH 8MM	1
32	KEY 4X4X82	1	71-2	WRENCH 6MM	1
33	MOTOR	1	71-3	WRENCH 4MM	1
33-1	MOTOR LABEL	1	71-4	WRENCH 3MM	1
34	MOTOR COVER	1	72	MANUAL	1
35	ANGULAR SETTING ASSEMBLY	1	81	C-RING S-35	1
36	TOOL REST	1	82	SCREW M6x10	4
37	HANDLE FOR TOOL REST	1	84	COVER	1
37-1	HANDLE FOR TAILSTOCK	1	85	SCREW M8x25	1
38	EXTENSION TOOL REST	1	86	NUT M8	2
39	TOOL REST BODY	1	87	WASHER 8MM	2
40	ECCENTRIC ROD	1	88	SCREW M6x12	1
41	C-RING S-19	2	87	WASHER 8MM	2
42	SPECIAL SCREW	1	88	SCREW M6x12	1
43	CLAMP	2			



OPERATION MANUAL

Spare Parts WL-20



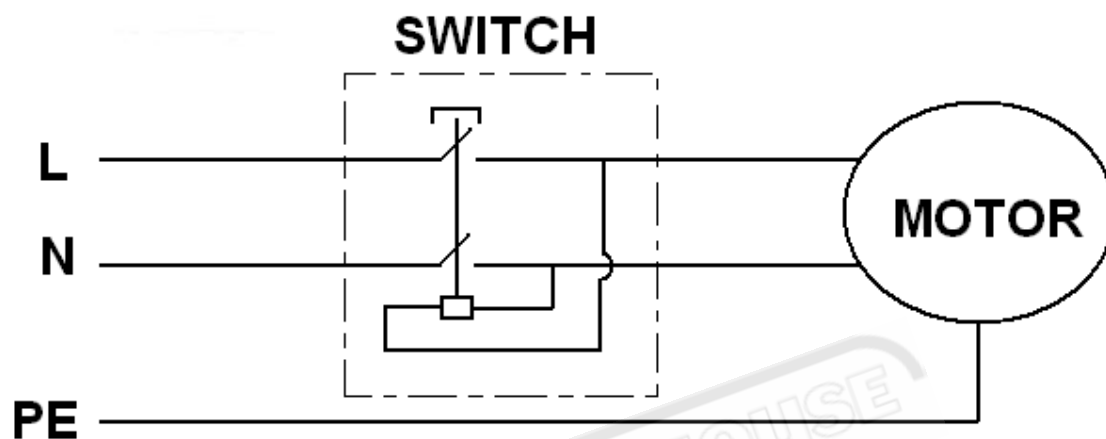
OPERATION MANUAL

Spare Parts List WL-20

No.	Description	Qty	No.	Description	Qty
1	HEADSTOCK	1	43	CLAMP-A	1
2	FACE PLATE	1	44	HEX NUT	3
3	HEADSTOCK SPUR	1	45	ANGULAR SETTING ASSEMBLY	1
4	SPINDLE	1	46	SCREW	2
5	KEY	1	47	SPRING WASHER	2
6	BEARING	2	48	GEAR ASSEMBLY	1
7	"C"RING	2	49	SPEED LABEL	1
8	SPRING	1	50	INSTRUCTION MANUAL	1
9	BRACKET-SHIFTING LEVER	1	51	HEX SCREW	3
10	"C"RING	1	52	BACK	1
11	"C"RING	1	53	BOLT-B	2
			54	CLAMP-B	2
13	MOTOR	1	55	ECCENTRIC ROD	1
14	KEY	1	56	TOOL REST BODY	1
15	SCREW	1	57	HANDLE ASSEMBLY	2
16	COVER-MOTOR	1	58	EXTENSION TOOL REST	1
17	PULLEY-MOTOR(RIGHT & LEFT)	1	59	LOCK HANDLE-TAILSTOCK	1
			60	TOOL REST	1
19	SPRING	1	61	TAILSTOCK SPUR	1
20	SLEEVE	1	62	TAIL SPINDLE	1
21	"C"RING	2	63	TAIL STOCK SCREW	1
22	PUSH-OUT ROD	1	64	HANDLE ASSEMBLY	1
23	KNOB	2	65	TAILSTOCK	1
24	"C"RING	3	66	WASHER	1
25	ECCENTRIC ROD	1	67	HANDLE WHEEL	1
26	SCREW	1	68	SCREW	1
27	"C"RING	1	69	SCREW	1
28	PULLEY-SPINDLE(LEFT & RIGHT)	1	70	STAND UPPER COVER	2
29	V-BELT	1	71	STAND LEG, LEFT	2
			72	STAND LEG, RIGHT	2
31	BEARING	1	73	PLATE	1
32	NUT-LOCK	1	74	SWITCH	1
33	NUT	9	75	SWITCH BOX	1
34	CLAMP	2	76	POWER CORD	1
35	NUT M4x40	2	77	CARRIAGE BOLT M8 x 12	20
36	"C"RING	1	78	WASHER 8MM	20
37	TURNING BASE	1	79	WASHER 8MM	8
38	BED	1	80		
39	BAFFLE	2	81	COVER	1
40	SCREW	4	82	PLASTIC JAM NUT M20 X 1.5	1
41	HEX WRENCH	4	83	SCREW	2
42	BOLT-A	1			

OPERATION MANUAL

Wiring diagram.
220-240V/50Hz, 1 Phase



MACHINERYHOUSE